



David Round, Inc.
Ruger Division
32405 Aurora Road
Solon, OH 44139
Phone: 440-248-4700
Fax: 440-248-8544
www.rugerindustries.com

STRONG**VERSATILE****ADJUSTABLE****AFFORDABLE**

HP-2A

- **4000 lb. Capacity**
- **Adjustable legs-open wide for big loads**

ACCESSORIES

- **Barrel Grip**
- **Floor Lock**
- **Extension boom**
- **Phenolic or Polyurethane wheels**
- **Power-Pak**

STANDARD FEATURES

- Meets Ruger's engineering standards of 150% structural overload of maximum rated capacity
- Adjustable legs to straddle large oversized loads
- Double action hand pump for quicker and easier lift
- Built-in hydraulic overload relief valve (An original Ruger patent)
- Needle type release valve permits pin-point control over lowering and holding of the heaviest or lightest loads
- Steel casters with roller bearing wheels
- Swivel hook with safety latch for to support heavy loads



With the adjustable leg feature, accomodating oversized loads is easy. Tested and exceeds ANSI/ASME PALD-12C standards. Meets ANSI Z.535

Prices, Specifications, and Options are subject to Change Without Notice.

All Ruger products are shipped F.O.B. Solon, Ohio 44139
Unit Ships-NMFC #189240 - Class 85 Shipping Wt. 740 lbs

FAX: 440-248-8544

E-mail: lift@rugerequipment.com



David Round, Inc.
 Ruger Division
 32405 Aurora Road
 Solon, OH 44139
 Phone: 440-248-4700
 Fax: 440-248-8544
 www.rugerindustries.com

STRONG

VERSATILE

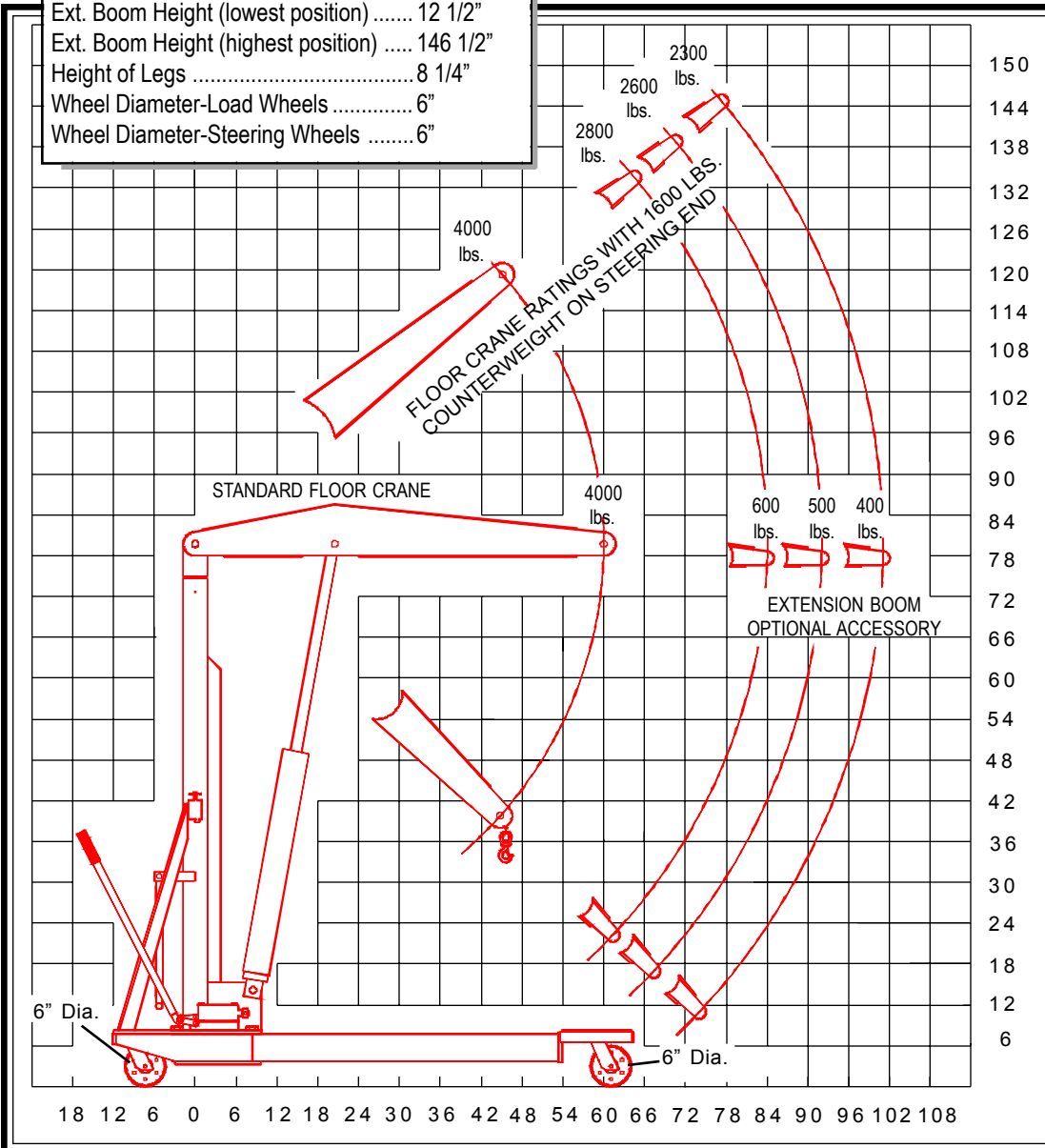
ADJUSTABLE

AFFORDABLE

MODEL: HP-2A

Model	HP-2A
Max. Capacity	4000 lbs
Overall Base Length	76-1/2"
Overall Width	37"-54"-67"
Overall Height	84"
Width Between Legs	24"-40"-53"
Boom Reach Retracted	60"
Boom Reach Extended	101"
Boom Height (lowest position)	39 3/4"
Boom Height (highest position)	119 1/4"
Ext. Boom Height (lowest position)	12 1/2"
Ext. Boom Height (highest position)	146 1/2"
Height of Legs	8 1/4"
Wheel Diameter-Load Wheels	6"
Wheel Diameter-Steering Wheels	6"

PUMPING CYCLES needed to raise boom through full travel; 31 with crane set for speed and 170 with crane set for power.



18 12 6 0 6 12 18 24 30 36 42 48 54 60 66 72 78 84 90 96 102 108